

EQ SWT
EQ SWT

72
96



Data Sheet

Analogue Meters with

Built-in Selector Switch With Moving-Iron Movement



Application

The built in selector switch type moving iron , panel meters ,EQ SWT housed in polycarbonate cases are for the measurement of three phase AC currents or voltages with various positions of integral selector switch,

Moving iron meters indicate rms-values practically independent of waveform even of high harmonic .Error of indication may occur for extreme waveforms (e.g. phase gating controls) and for frequencies above 100kHz.

These meters offer several advantages in switchboards and Generating Set Panels.Number of meters can be mounted in a single Cut out (Mosaic mounting). For CT operated ammeters,dials can be field fitted based on CT ratio.Front window glass and bezel can be easily replaced.

Movement

Moving iron movement has pivots of very high hardness.Movement is suspended between spring loaded sapphire jewels.Movement is critically damped by use of silicon coil

Mechanical Data

Case details	Moulded square case suitable for mounting in Control / Switchgear panels, Machinery consoles.
Case material	Glass filled polycarbonate , flame retardant and drip proof as per UL 94 V-0.
Front facia	Glass
Colour of bezel	Black
Position of use	Vertical
Panel fixing	Swivel screws
Mounting	Stackable in a single cutout
Panel thickness	≤ 40 mm
Terminals	
Voltmeters and ammeters ≤ 30A	Hexagon studs, M4 screws and wire clamps E3 (DIN 46282)

Electrical Data

Measured quantity	:AC voltage or current
Power consumption: voltmeters	< 4.5VA
Ammeters < 15A	< 0.5VA
Ammeters > 15A	< 0.8 VA
Overload capacity	(acc. to IS: 1248 / IEC 51)
Continuously	:1.2 times rated voltage /current
Short duration	
Voltmeters	:2 times rated voltage max 1000V ,upto max 5 second.
Ammeters	EQ SWT 72/96
5 s max.	10 times
1 s max	40 times(250 A max.)
Enclosure code (IEC 529)	IP 52 case IP 00 for terminals without back cover IP 20 for terminals with back cover
Insulation class	Group A according to VDE 0110
Rated insulation voltage	EQ72/96: 1000V
Proof voltage	EQ72/96: 2kV
Installation category	600 V CAT III (IEC 1010)
Insulation resistance	> 50 Mohm at 500 V d.c

Standard Measuring Ranges

A. C. Voltage	A. C. Current
0/120	
0/150	1A or 5A
0/300	There will be 4 switch positions as OFF L1 L2 L3
0/500	
0/600	

For 3 phase 3 wire system,

4 switch positions as below

OFF L1L2 L2L3 L3 L1

For 3 phase 4 wire system ,

6 switch positions as below

L1L3 L1L2 L2L3 L3LN L2LN L1LN

Scale and Pointer

Pointer	Knife - edge pointer
Pointer deflection	0...90°
Scale characteristics	Near Linear above 10% of nominal full Scale value
Scale division	Coarse - fine
over range:	
Ammeters	2 times nominal current
voltmeters for use on Voltage transformer	1.2 times nominal voltage
Scale Interchangeability	Interchangeable

Accuracy at Reference Conditions

Accuracy class	1.5 according to IS: 1248 (IEC 51/ DIN EN 60051)
Reference conditions	
Ambient temperature	23°C + _ 2
Position of use	Nominal position + 1°
Input	Rated value of measured quantity
Waveform	sine wave,distortion factor ≤ 5 %
Frequency:	45...65HZ
Other conditions	IS : 1248 (IEC 51/ DIN EN 60051)



Nominal Range of Use	
Ambient Temperature	0...50 °C
Position of use	Vertical +- 5°
Frequency	15...100Hz (Voltage) 15...400Hz (current)
External magnetic field :	A t 0.4 kA/m, less than 6 % of fiducial-value (not as a percentage class index)

Environmental Conditions

Climatic suitability	Climate category II as per IS : 1248 (climatic class 3 according to VDE/VDI 3540)
Operating temperature	- 10... + 55°C
Storage temperature	- 25... + 65°C
Relative humidity	≤ 75% annual average, non-condensing
Shock resistance	15g, 11 ms
Vibration resistance	1.5 g at about 50 Hz.

Applicable Standards

Nominal case and cutout dimensions for indicating Electrical instruments	:	IS 2419 DIN 43700
Scale and pointer for electrical measuring instruments	:	IS 1248 DIN 43802
Connections and Terminal markings for panel meters	:	IS 1248-1983 DIN 43807
Terminal bolts / leads.	:	DIN 46200/46282
Safety requirements and protective measures for Electrical indicating instruments and their accessories.	:	IS 9249-1979 DIN 40050/8-70, VDE 0110/ 11-72 VDE 0410/ 10-76 IEC 529 , IEC 1010
Performance specifications for direct acting indicating analogue electrical measuring instruments and their accessories	:	IS 1248-1983 IEC51/DINEN60051 DIN 43701
Environmental conditions	:	IS 1248 - 1983 IS: 9000, Part 5, 7, 8, VDE / VDI 3540
Front frames for indicating measuring instruments Principle dimensions	:	DIN 43718
UL Combustibility Class	:	UL 94 V-0
Comply with following European directives (EMC Directive), 73 / 23 / EEC (low voltage directive) & ammendment 93 / 68 / EEC, For CE Marking.	:	89 / 336 / EEC

Options

Case	
Front facia	Antiglare glass
Colour of bezel	Red, Yellow, Blue, White.
Red index pointer	Front adjustable on site
Position of use	on request 15....165°
Dial	
Blank dial	With initial and end values marked.
Special markings	Numbering / Lettering.
Division dials	Basic divisions without numbering.
Colour markings/bands	Red or green

Analogue Meters with Moving - Iron Movement

Over range (ammeters)	No over range or 6 times over range over nominal current
-----------------------	--

Accessories

Safety Terminal protection

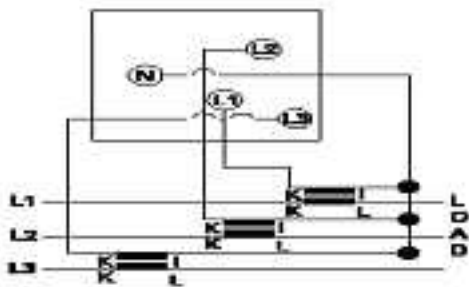
Full sized polycarbonate back cover to provide protection against accidental contact (hand and fingers) acc.to IS 9249, VDE 0410.

Safety Precautions

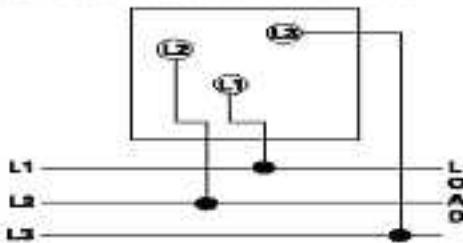
- 1) Instruments with damaged bezels or window glasses must be disconnected from the mains.
- 2) Adequate safety clearance must be maintained to control panel fasteners and to sheet metal housing. Id non-insulated connector wires are used.
- 3) The back cover must be snapped into place after connector wired have been clamped for protection against accidental contact.
- 4) Scales may only be replaced under voltage-free conditions.
- 5) Bezels and window glasses may only be replaced under voltage-free Conditions.

Connections

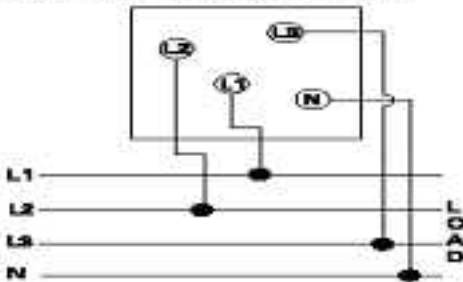
AC Ammeters with Selector Switch



AC Voltmeters 3 Phase 3 Wire

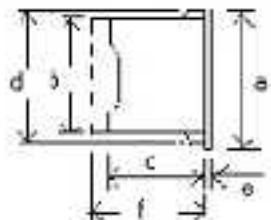


AC Voltmeters 3 Phase 4 Wire



Dimensions

For voltmeters & ammeters



Dimensions (in mm)	EQ72	EQ96
Bezel	72	96
Case	66	90
Depth	53	53
	67.5	91.5
	5.5	5.5
Cutout size	68 ± 0.7	92 ± 0.8
Depth with back cover	64	64
Weight (approx)	0.19 kg	0.23 kg

Ordering Information

Type EQ	Switch type	Moving-iron panel meter
Front dimension	72, and 96	72 mm x 72 mm 96 mm x 96 mm
Over range (ammeters)		no over range * 3 2 times nominal current * 1, 6 times nominal current * 3
Measuring Ranges		Refer to table inside
Terminal protection		full sized polycarbonate backcover
Panel Fixing		Swivel Screw
Red Index Pointer		None * 1
Front facia		Normal glass * Antiglare glass*
Colour of bezel		Black * Red, Blue, Yellow, White*
Position of use		Vertical * On request 15 165 **
Dial		Standard scale same as measuring range Blank dial with division* Additional lettering on request * Additional numbering on request * Coloured marking red or green * Coloured sector red or green *
Logo		RISHABH

* standard
Please clearly add the desired specifications while ordering

Ordering example

EQ SWT 72 Measuring range 150 V, dial 0 - 100%

Specifications are subject to change without notice(08/06)



Manufactured by
RISHABH INSTRUMENTS PVT. LTD.

F-31, MIDC, Satpur, Nashik-422 007. (INDIA)
Phone : 351062, 351063. FAX : (0253) 351064.
E-mail : rishabh@bom2.vsnl.net.in